

# InfoDraw

## Wireless Mobile Video Solutions

### Infodraw PMRS-102 Personal Media Relay System Product Specification

#### Overview

PMRS-102 is a smart, small, handheld, wearable streaming media system from the field over cellular network. It allows to stream video/audio/location live and **monitoring** video, audio and location over map anywhere upon alarm/request.

#### Key Features

- **Handheld, wearable small form factor**
- Real embedded system (design for cellular network)
- Live **video/audio/location** streaming (low latency)
- **Dual encoding (recording and streaming)**
- **Dual resolution for recording/streaming D1/CIF accordingly**
- **PTZ control using RS-485**
- **Built-in cellular module (need only SIM)**
- **Built-in memory for local recording (128MB)**
- **Micro SD slot for local recording (up to SDHC 32g)**
- **Optional Encryption (RSA 1024+AES)**
- High performance DSP based CODEC (H.264)
- 1 Analog video input CIF/D1
- 1 video over IP
- 1 audio over IP (2 ways)
- Built-in GPS receiver
- **Deep Sleep mode and scheduler (months) using battery only**
- Monitoring video/voice and location over map
- Tracking history over map
- Bit rate/Frame rate remote control
- Automatic bandwidth control
- Alarm push button
- Motion detection
- SMS send according to events
- **Built-in lithium battery (5 hours streaming)**
- Very low power 0.5 Amp while streaming (5v)
- Built-in 5v output to camera
- Recording on remote monitoring
- Web streaming using flash client
- Permission capability for different access level
- Upgrade firmware on the fly
- Small form factor 5 X 10 X 3 cm
- Built-in LAN interface



# InfoDraw

## Wireless Mobile Video Solutions

### Technical Specifications

<b>Video</b>		
Video Input	2.5 mm video/audio/power 5v plug	PAL/NTSC
Video compression	H.264 Dual encoding (streaming/recording)	Up to D1
Bit rate	From 10kbs to 2Mbps	
Frame rate	Up to 25/30	
PTZ Control	Built-in RS-485 (T+, T-)	
<b>Audio</b>		
Audio Input	Built-in microphone or Line in	
Audio output	Line out	
Audio compression	AAC	
<b>GSM</b>		
GSM	Built-in (need only SIM)	HSPA/3G/EDGE/GPRS
Antenna	Built-in	
Bandwidth control	Automatic	
<b>GPS</b>		
GPS	Built-in	Update every few sec
Antenna	External	
<b>Alarm Button</b>		
Push button	On surface	
<b>Memory</b>		
Micro SD	Slot (max bit rate according to micro SD write speed)	Up to 32g
<b>I/O</b>		
4 Input/4 output	Built-in Through cable interface	Dry contact
<b>Power</b>		
Power Input	5V	AC/DC to 5V adapters
Power consumption	500mA while streaming	
Battery Lithium	Built-in 4000 mAh (5 hours streaming)	
Power output	5v output to camera	
<b>Environment</b>		
Temperature Input	-10 +60	
<b>Physical</b>		
Dimension	5 x 10 x 2.8 cm	
Weight	130 gr	
<b>Other Interfaces</b>		
USB client	Built-in	For Setup
video/audio/power cable	Splitter cable with RCA, audio, 5V power	
Earphone/mic cable		
LAN	10/100 Built-in Through cable interface	
<b>Protocols</b>		
RTP/RTSP/SDP		

# InfoDraw

## Wireless Mobile Video Solutions

### PMRS-102 System Advantages:

- Handheld, wearable small form factor
- MRS architecture is based on MRS server
- Units can stream with the highest bandwidth exist regardless number of clients
- Dual encoding (local recording in D1 and streaming in CIF is possible)
- System design for low bandwidth and packet delivery failure
- Automatic bandwidth control by the units
- Multi clients to multi units communication using the server
- Only MRS server must have fix IP address
- Live video, voice and location over map are combine together in one monitoring application
- Built-in cellular module (need only SIM)
- Deep Sleep mode and scheduler (remote control)

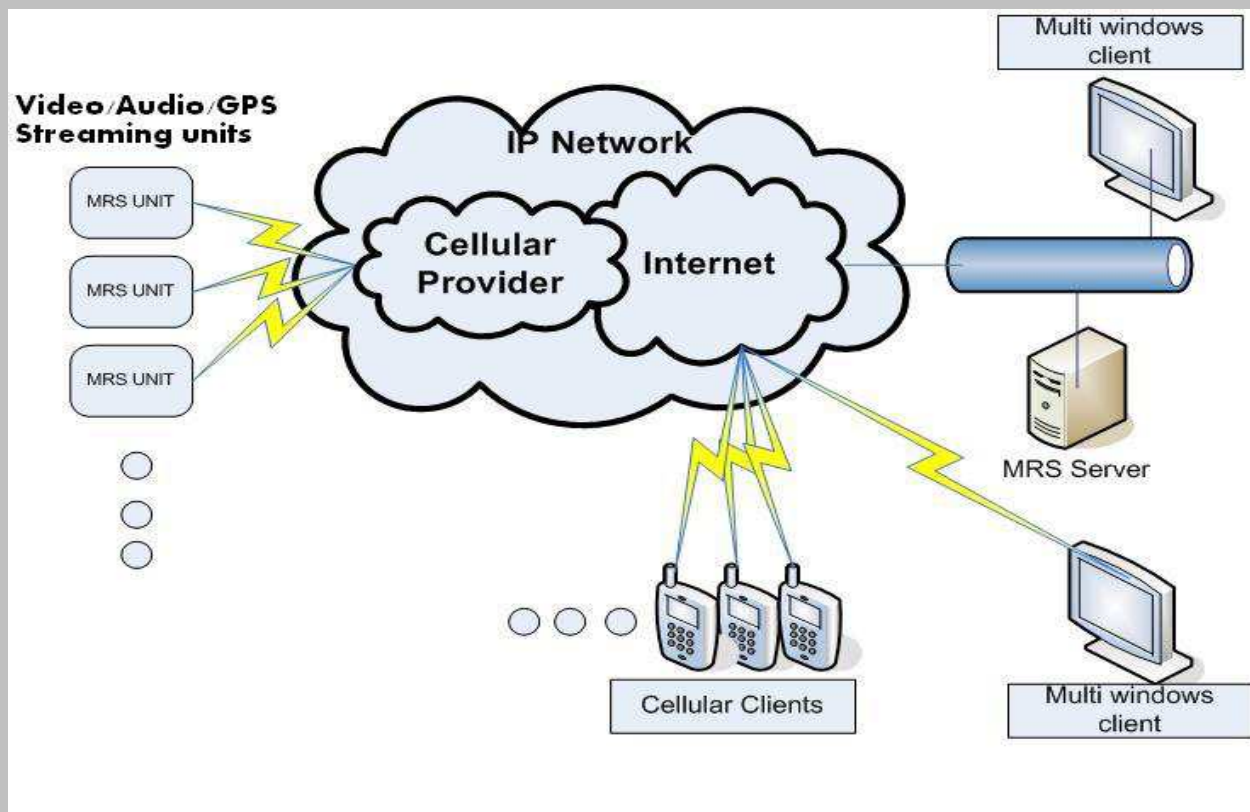


Figure 1- MRS System Architecture



# InfoDraw

## Wireless Mobile Video Solutions

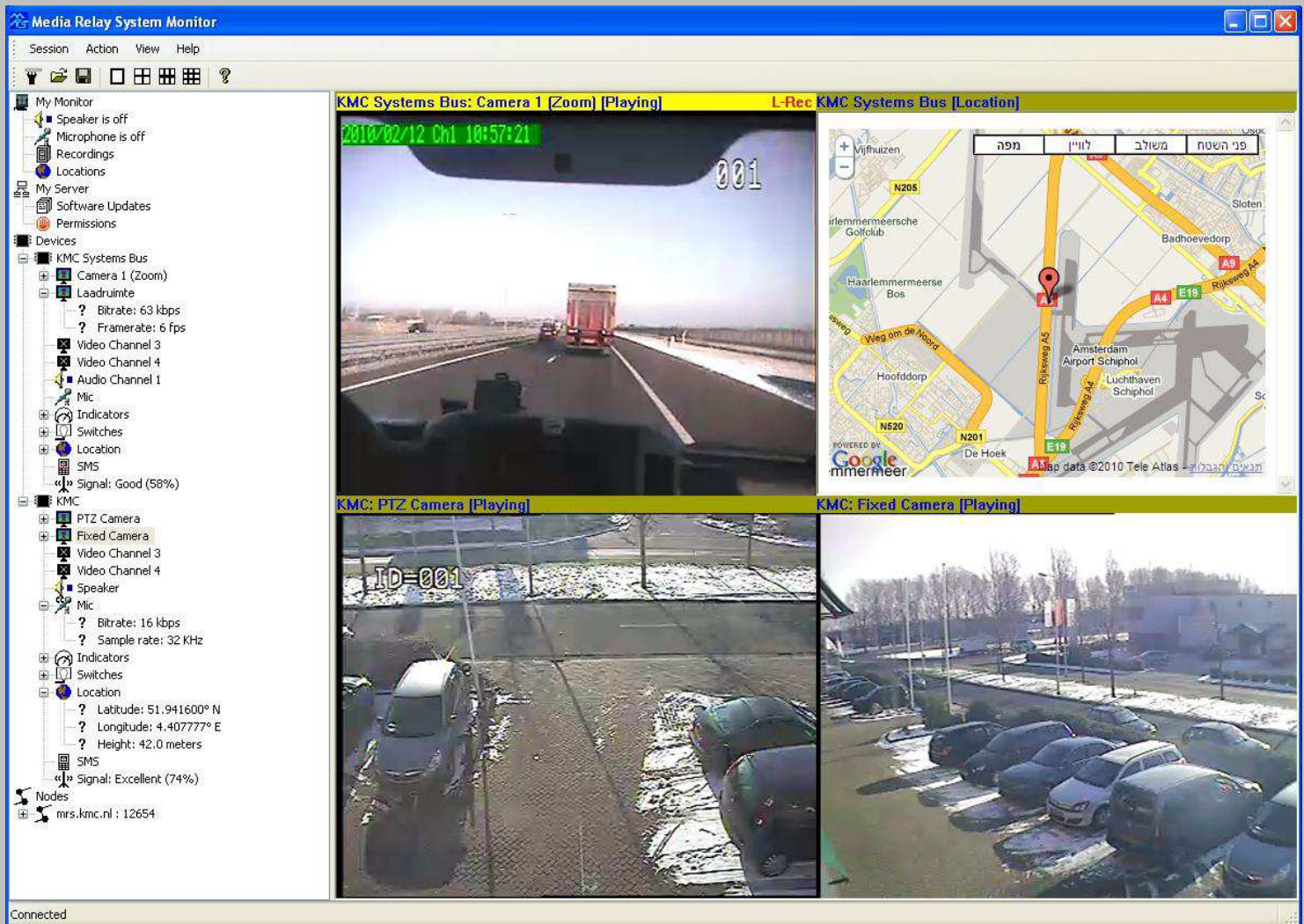


Figure 2- MRS Demo monitoring